

INDEX

PG	DESC
1-2	GPS CONTROL (1,2,3 & 5)
3-19	PHOTO ID POINTS
20-21	LIDAR SUPPORT
22-23	PHOTO ID'S
24-51	LIDAR SUPPORT
52	PHOTO ID'S (2003 & 3003)
53	LIDAR SUPPORT + RTK @ BASE 1
54	LIDAR SUPPORT + PID # 2001 (REPLACE)
55	RTK @ 7 & 8
56-58	LIDAR SUPPORT
59	RTK @ 9 & 10
60-62	ADD. GPS CONTROL
63	RTK @ 8 (FAILURE...)
64	" " " SUCCESS! - QA/QC PTS
65	RTK @ 7 - QA/QC PTS
66-67	RTK @ 6 - QA/QC PTS
68	RTK @ 4 - QA/QC
69	RTK @ 5 - QA/QC

INDEX

PG	DESC
70-72	LIDAR SUPPORT W/ RTK @ 1/3 QA-QC PTS
73	LIDAR SUPPORT
74	PHOTO ID - 3005 REPLACEMENT

(1)

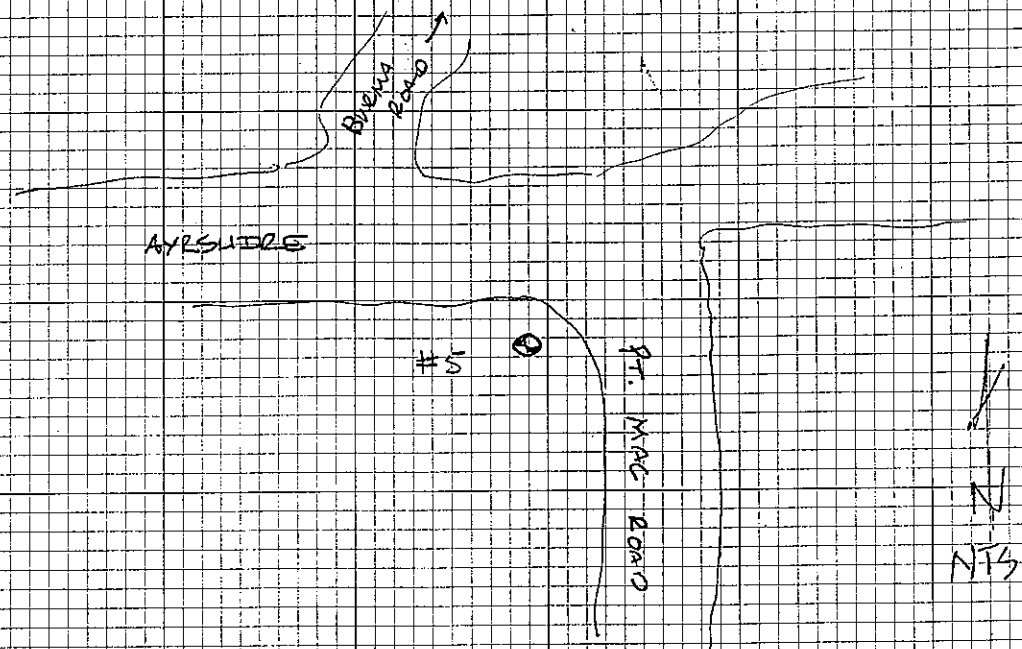
### CPS Control

ZND OBS HT  
1.115 M / 3.66'

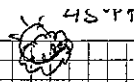
TC (5)  
HT = 11.173 M / 36.5 FT  
RCNR # 1225

START = 0854 / 1703

STOP = 1700 /



FW  
29



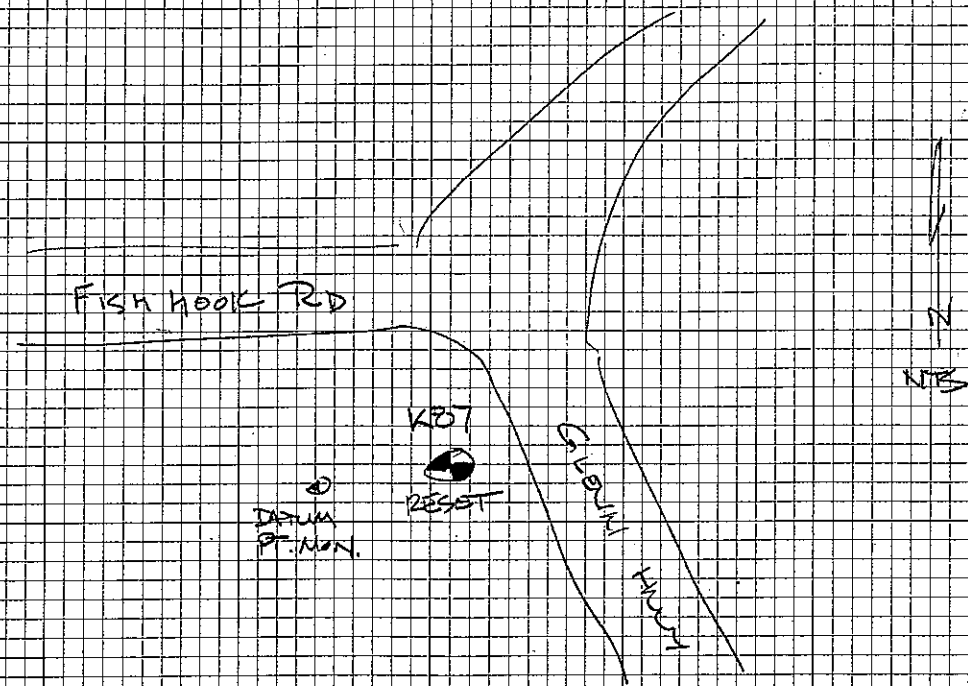
(11)

ZND OBS HT  
1.115 M / 3.66'

TC (3)  
HT = 10.92 M / 36.0 FT  
RCNR # 0609

START = 10:40 / 1812

STOP = 1810 / 1237 (4/30)



2ND OBS HI

1.093M / 3.61'

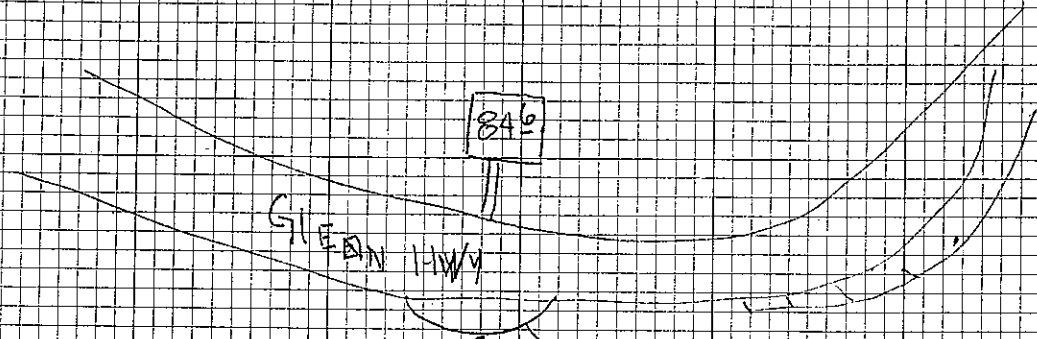
TC (2)

HI = 1.128M 3.70'

RCLR # 8361

START = 1211Z / 1857

STOP = 1854 / 1317 4-30



SET 1/2" DIA STAINLESS  
 STEEL DRIVE ROD  
 DRIVEN 8" TO  
 REFUSAL w/ 4" PVC  
 COLLAR  
 AS MILE POST

ONE  
 CAR  
 T/O

2ND OBS HI

1.118M / 3.67'

TC (1)

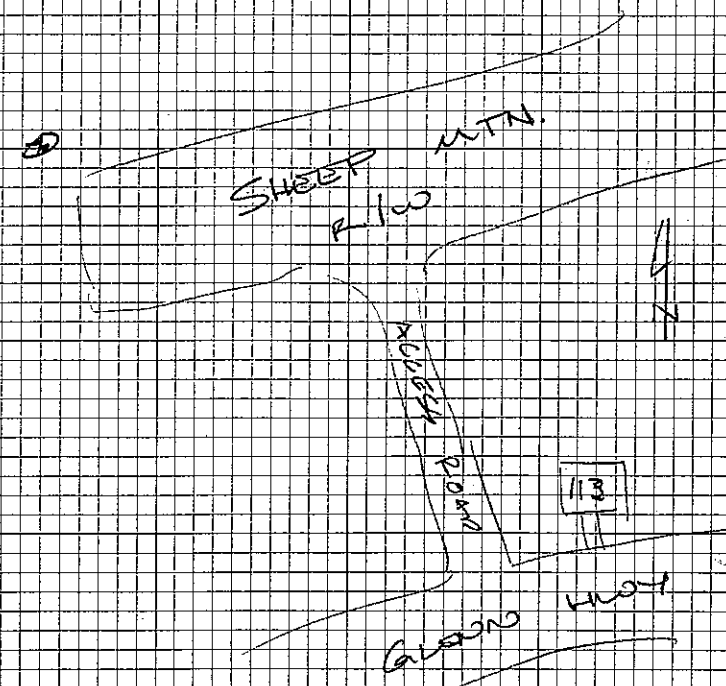
HI = 1.154M 3.79'

RCLR # 8513

START = 1258 / 1932

STOP = 1930 / 1354 (4-30)

FIND 1/2 SS ROD  
 DATUM PT  
 W/ 2" BRASS CAP



SHEEP HWY  
 R. 100

GLADON HWY  
 R. 100

113

11-017-2

MSB LIDAR

PHOTO ID CONTROL

T(3)

HI: 1.075 M / 3.53 FT

RCVR: 0263

START - 7:48A

STOP - 7:43



5-3-11

11-017-2

SB  
FW  
RG

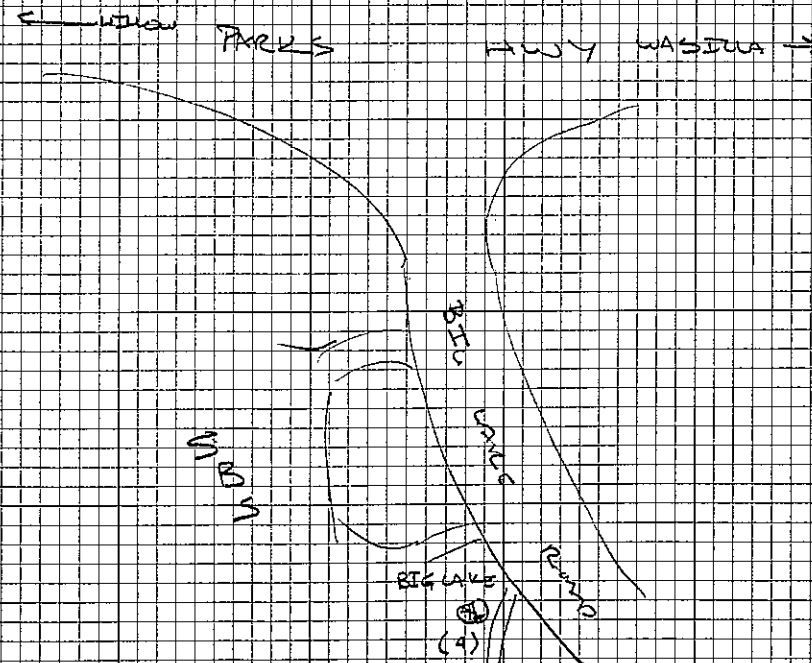
T(4) - BIG LAKE

HI: 1.287 M / 4.22 FT

RCVR# 0254

START = 9:40

STOP = 16:14



④

MSB LITRE

PHOTO ID CONTROL

A/C (S)  
HI = ~~11:41~~ 11:47  
PLUR # 0578

START = 10:34

STOP = 15:32 1/2



5-3-ZON  
ABF PARTLY

11-07-2

F. WAGNER (H)  
R. GAFFEY  
S. BEATTY

⑤

MSB LIDAR

PHOTO ID POINT

TC 2007  
HI = 982' ✓  
RLVR # 7227 ✓  
33' ✓  
ABOVE

START = 11:35

STOP = 14:59

TC 3007  
HI = 974' ✓  
RLVR # 0516 ✓  
140' ✓  
ABOVE

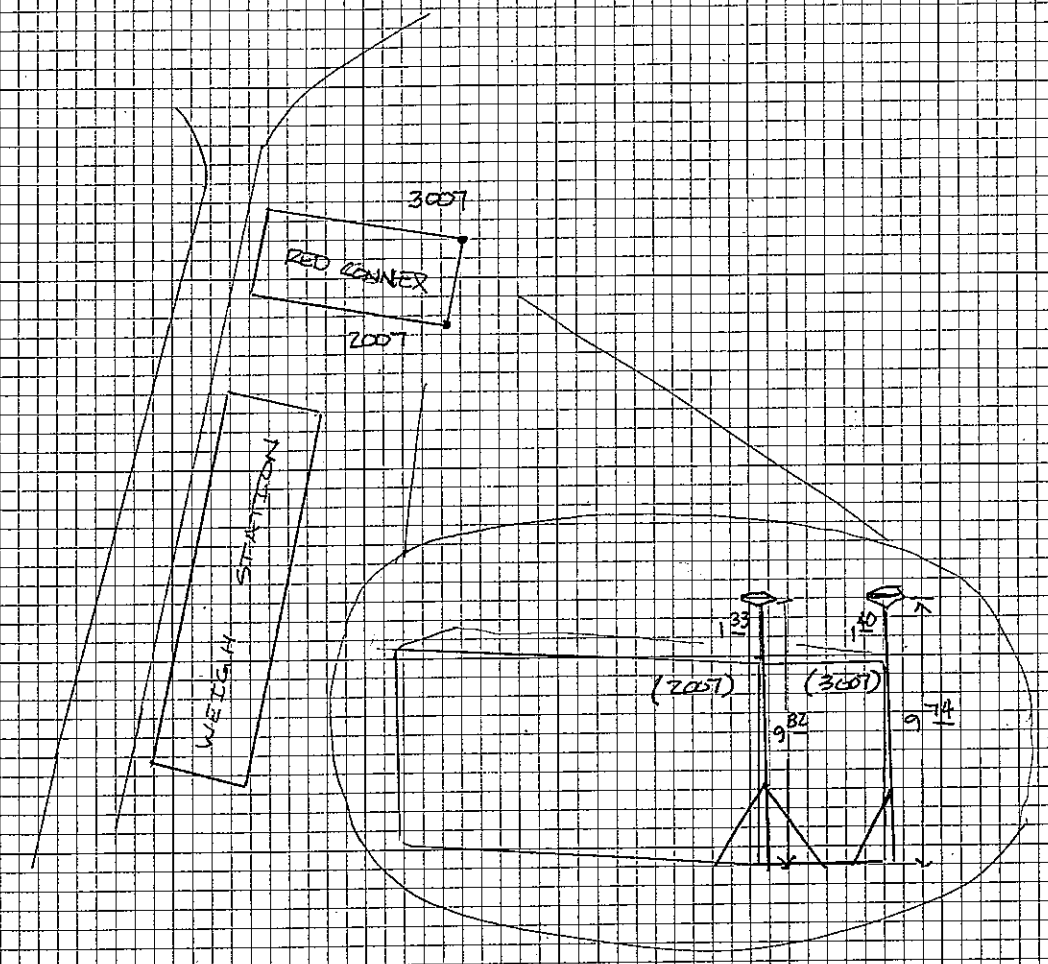
START = 11:41

STOP = 15:03

5-3-2011  
280°F / 100% RAIN

11-017-2

F. WAGNER (2)  
R. GAFFEY  
S. BEATTY



11-017

T@ 3 Fishhook

HI: 1.017 ✓

RCVP: 0203

START: 7:50A

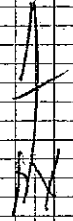
End 15:07

Palmer Fishhook B

↑ America

GREEN HILL

↓ Palmer



33



Te A SPENARD, Big Lake

UNIT #0754 HE 1.286<sup>L</sup>m  
A 22 P

START 6:20 +/-  
END 17:51 +/-



5.B

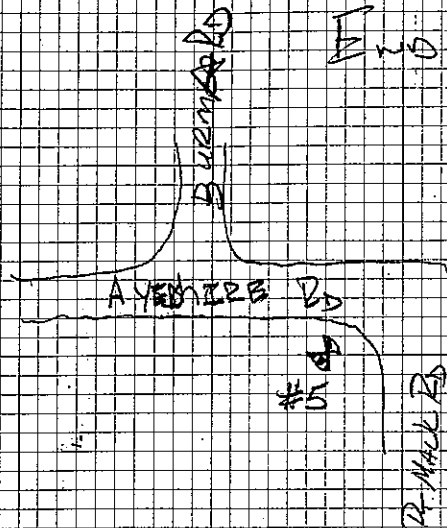


№ #5 BURMA TRIPod

UNIT ~~578~~ 578 HI 1187

START 07:06 1/2

End 17:08 1/2



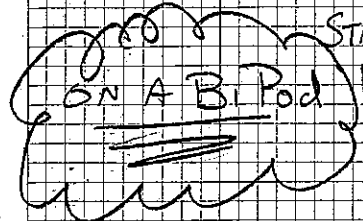
Kg UNIT SB

Photo Control Point

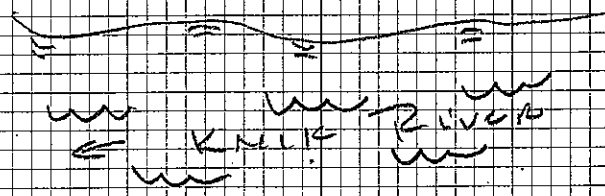
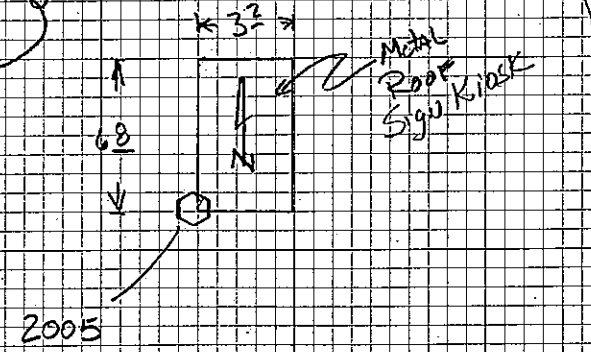
№ 2005 UNIT 7227 HI 976 FT / 2925 M

START 10:07 1/2  
END 10:13:26 1/2

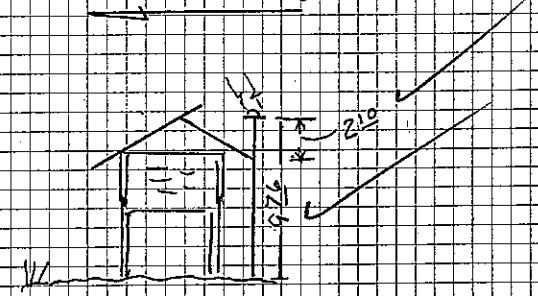
№ 2005



GRAVEL  
PARKING  
AREA



Profile View



OLD KALIK RIVER BRIDGE

OLD GILOM HWY → TO ANCHORAGE

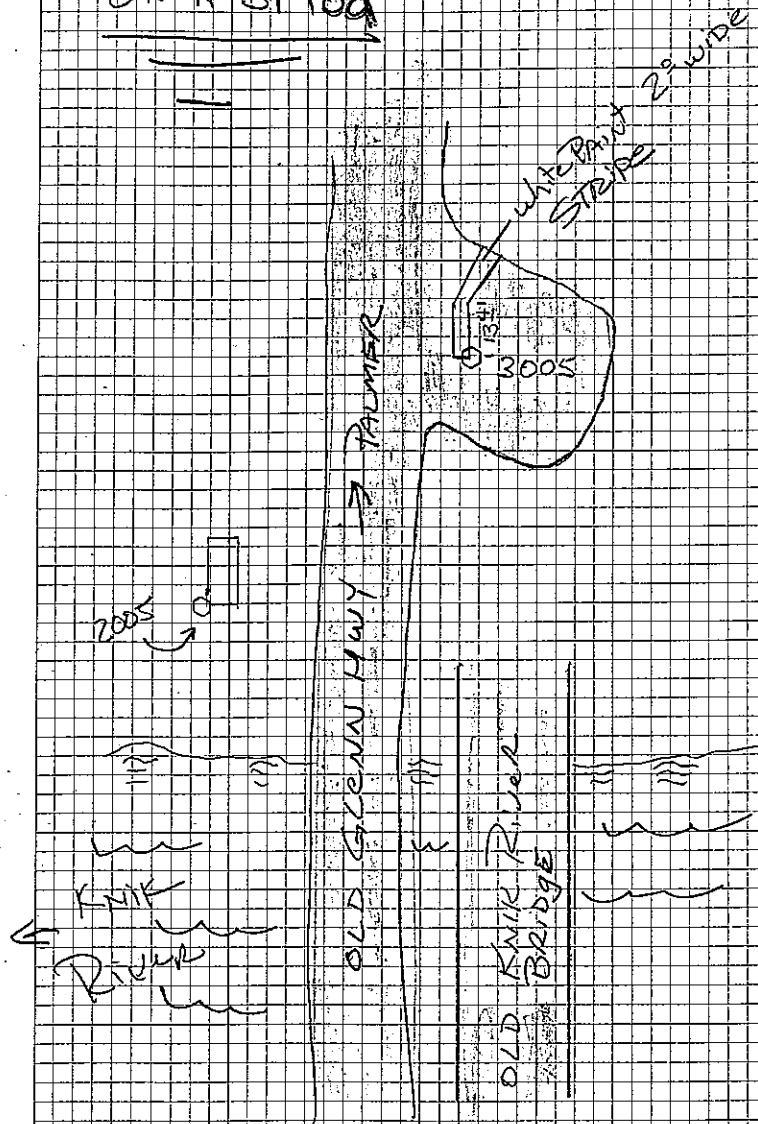
Photo Control Points

No 3005

HI 482 FT / 1469 m

START 10:22

ON A BIPOD End 13:32



SB

T@ 2004 Corner Bridge Abutment  
UNIT 0331 H/I 2000m

START 11:10 +/-  
END 14:26 +/-

BiPod

T@ 3004 Corner Bridge Abutment  
UNIT 595 H/I 1421/466

BiPod

START 11:21 +/-  
END 14:29 +/-

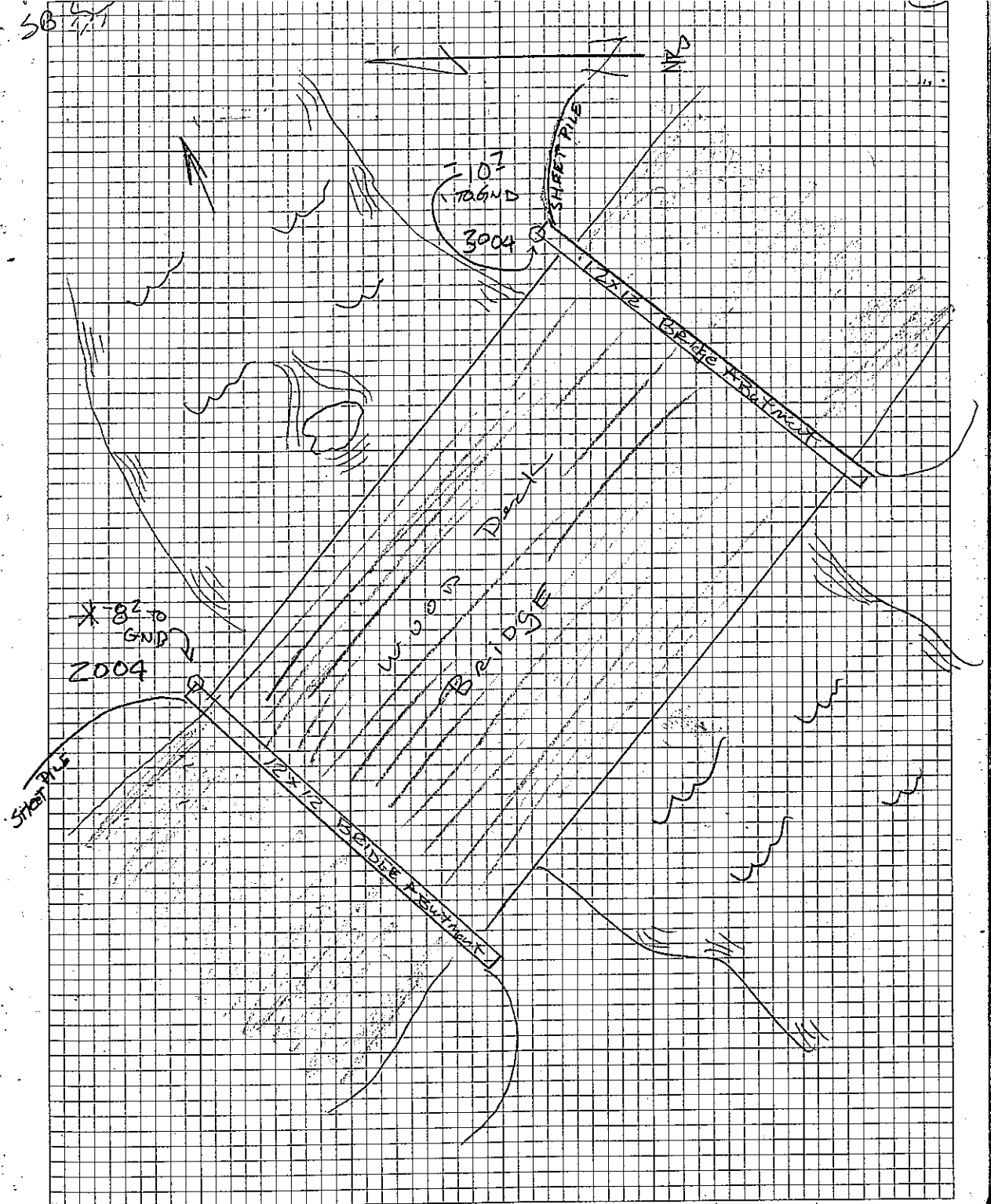


Photo Critical Point Curry, AK

#2003 unit 578 HIZ 2286 / 750 ft

START: 09:55 1/2

END: 12:58 1/2

026

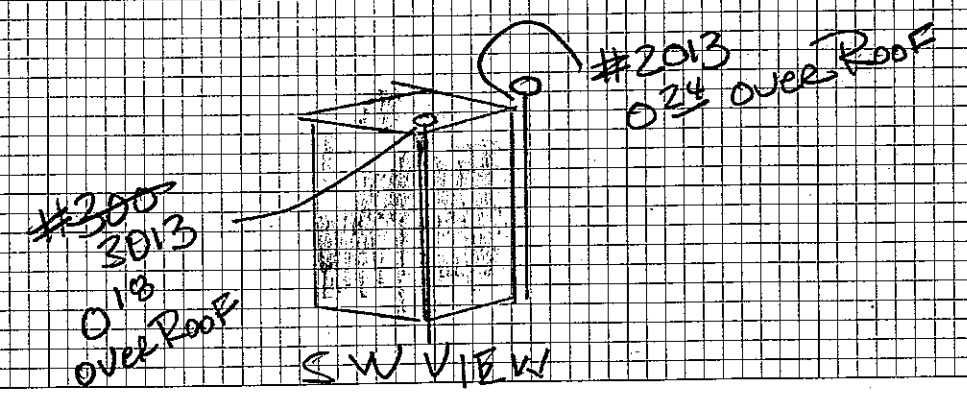
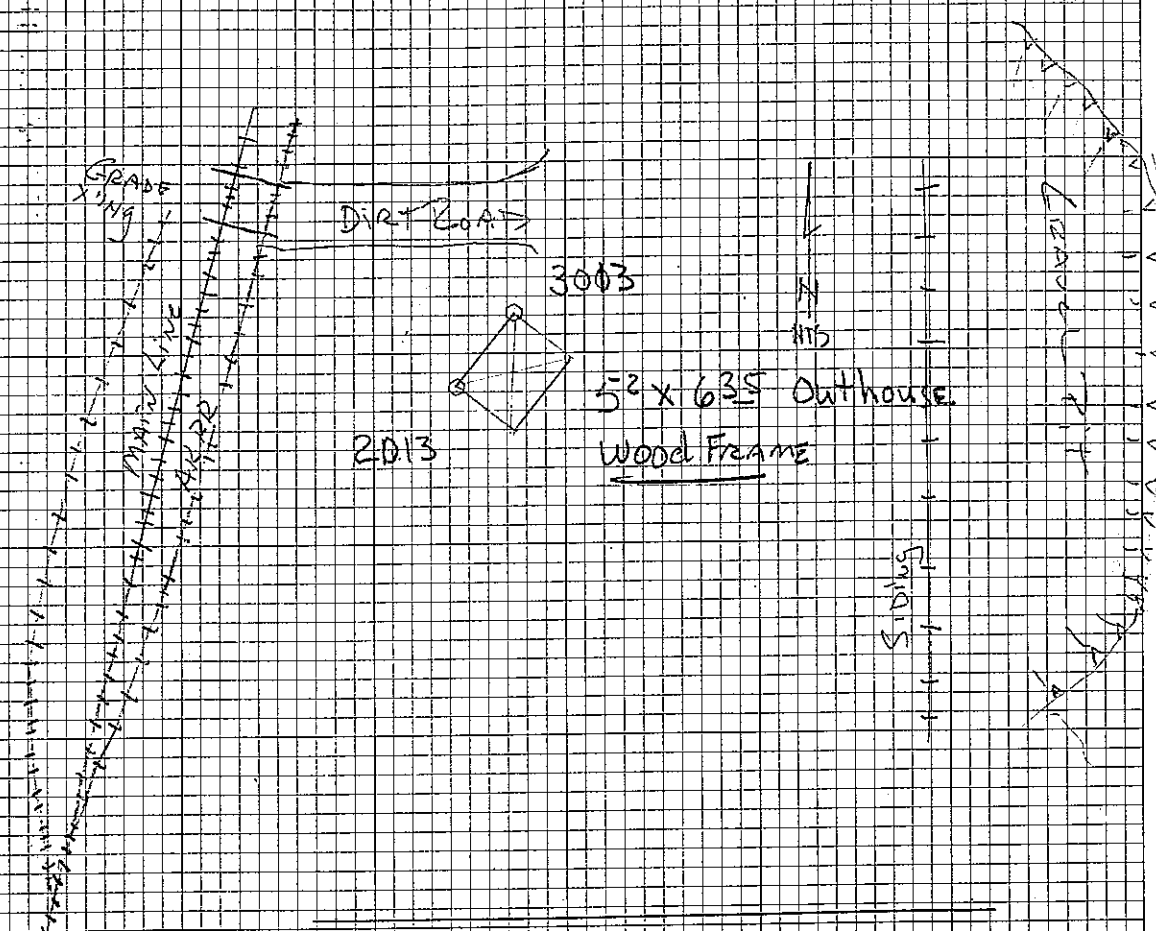
#2013 unit 263 HIZ 2286 / 750

START: 09:56 1/2

END: 12:58 1/2

0.18

K4 SB (38)



GPS Control Base

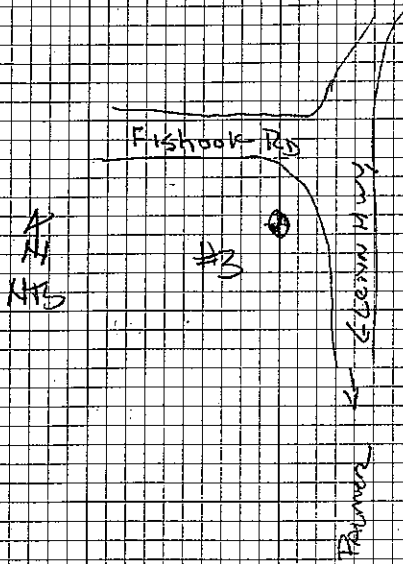
#3 Fishhook Unit 595 HI 1.026 m ✓✓

~~Tripod 5 sec~~

387 F

START 08:26 ±1/2

END 16:35 ±1/2



SB

#2 Vantage Point HI 1132 m ✓

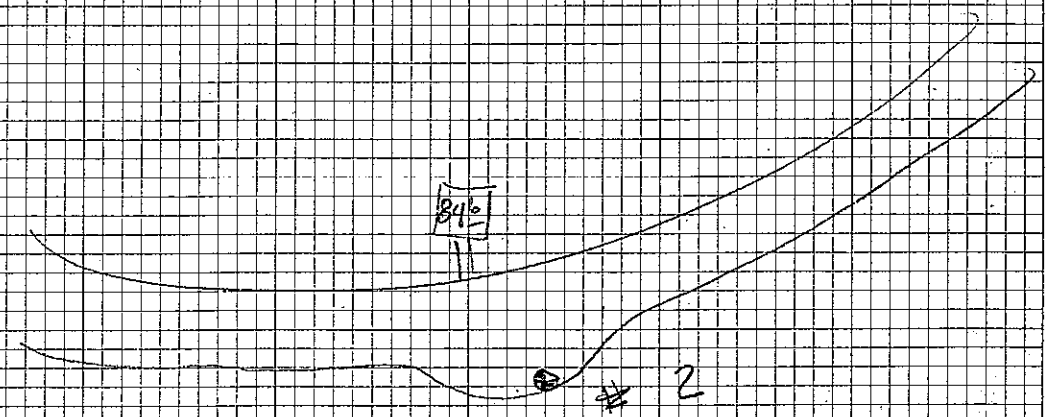
Datum Point in 4" PVC 371 F

~~Tripod~~

Unit 7225

START 10:3

END 15:39



#2002

UNIT # 7227

HI 1812 / 6.14

START 09:37

END 15:52

-110 FT TO GND

CAME BACK, END DISTURBED !!!

Re-OBSERVED  
See P 19 THIS BOOK

#3002

UNIT # 609

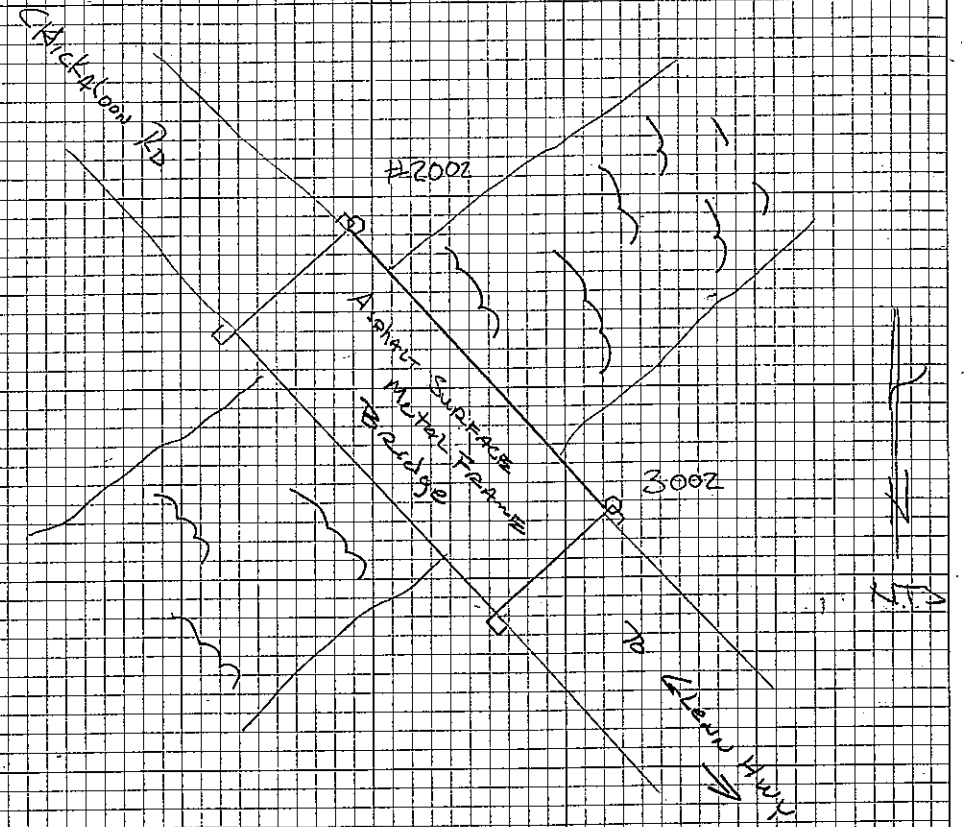
HI 1881 / 6.17

START 09:47

END 15:57

No Measure Down  
to GND @ Toe of  
BRIDGE ABUTMENT  
GND FALLS AWAY  
TOO STEEPLY

SB



Both Points Located on Down Stream  
Side, Closer NEAREST CREEK



No 1 AIRPORT

$$HI = \frac{1207}{\frac{202}{M} + \frac{202}{F}}$$

WIND 0263

START 11:09

END 15:04

149  
3B



3001 SE Corner Kiosk  
UNIT 578

3 444 11 30

Road

START 11:44

END 14:46

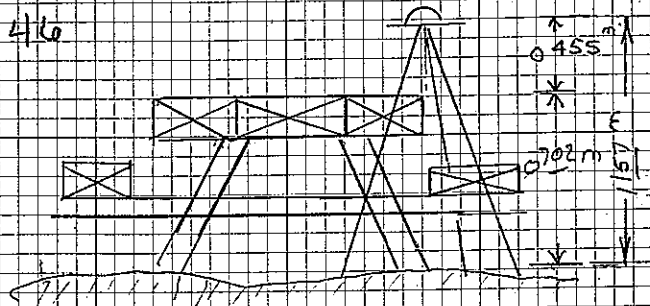
2001 Most Wily Corner Picnic Table\* HI 0455 m 149 ft  
UNIT 754

Pool

START 11:45

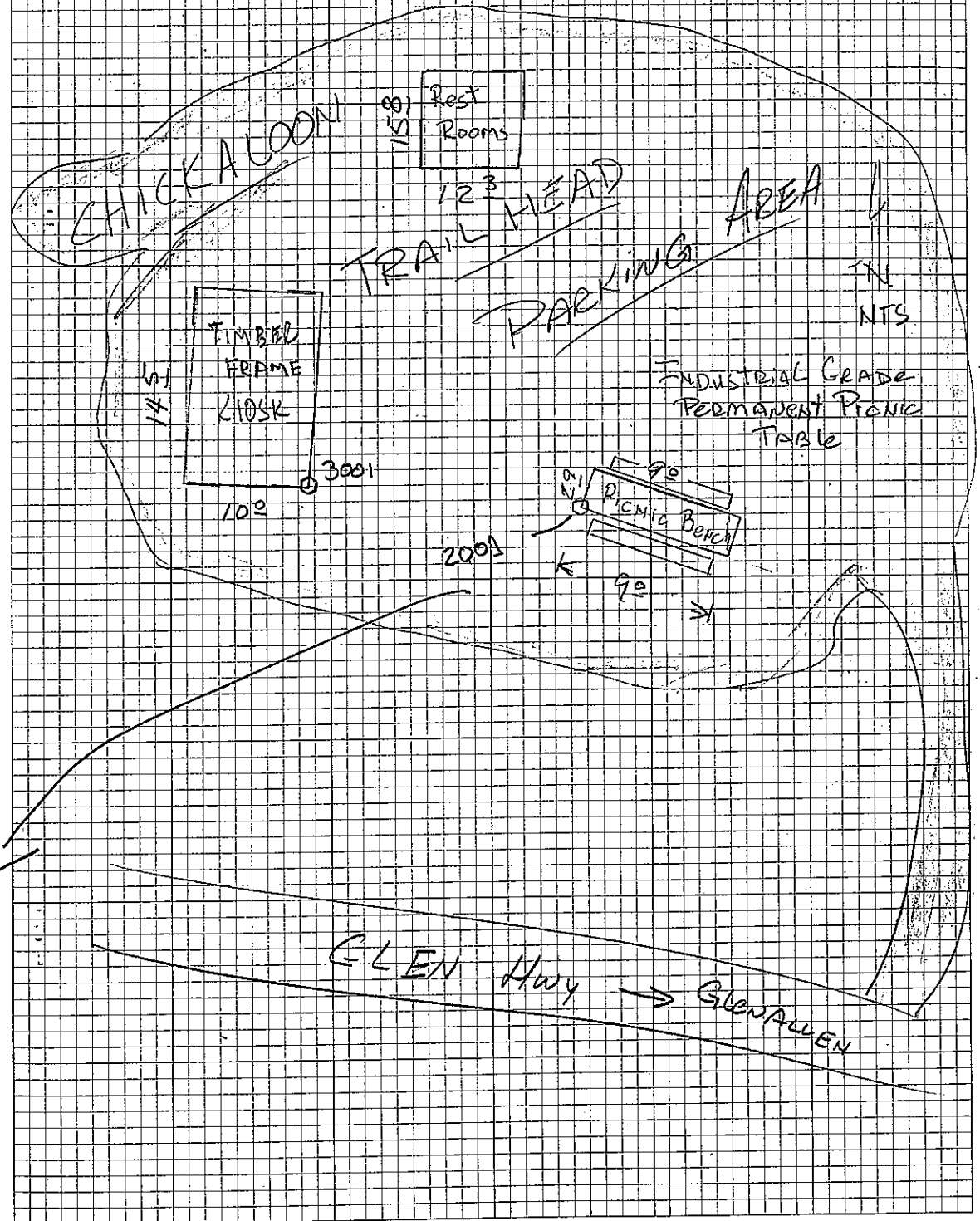
END 14:46

GND 1157



\* Industrial Picnic Table cannot be moved

Rg  
SB



GPS Control

@ # 1

SPENARD

HIZ 1115 366

Tripod

UNIT 609

START 0910

END 1936

KEY SB

@ # 2

VANTAGE Point

UNIT 263

HIZ

M 1134

R 372

Tripod

START: 1332

END 1712

@ # 3

FISHOOK

HIZ 0977

Tripod

UNIT ~~7227~~ 7225

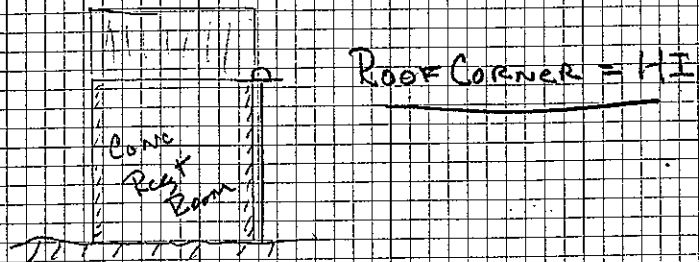
START 1140

END 1812

PHOTO CONTROL POINTS  
 @ PALMER S.D. Hatchue Pass

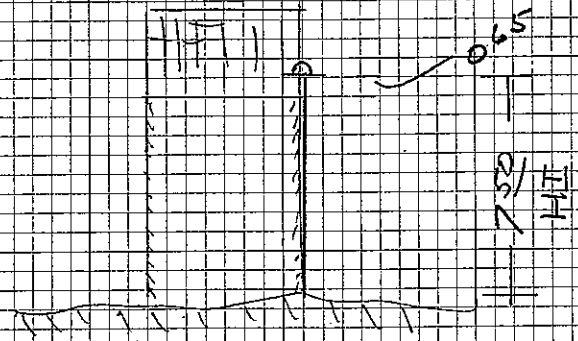
to 2006 UNIT 576 HZ 690

Role  
 START 10:53  
 END 18:42



to 3006 UNIT 576 HZ 690

Role  
 START 11:00  
 END 18:43



To Independence  
 mine

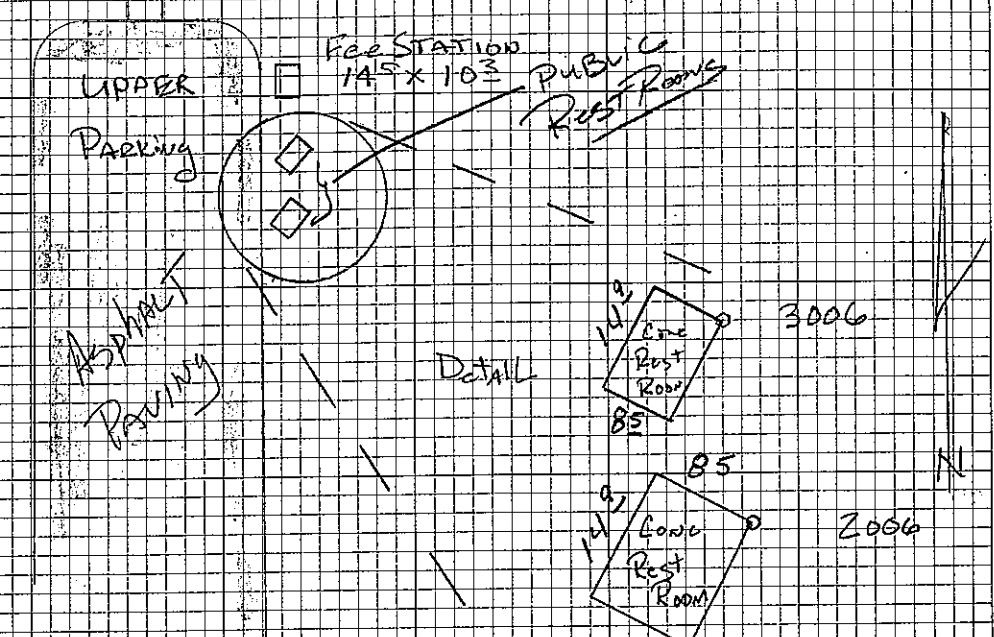


PHOTO CONTROL POINTS

Ⓜ@ 2003 SW CORNER 4x4 wd post

Tele Ped

UNIT 595

START 12:04

END 17:57

HI 1910 / 626

Ⓜ@ 3003 SW CORNER 4x4 wd Post

Tele Ped

UNIT 0754

START 12:23

END 18:07

HI = ~~540~~ / ~~540~~ | ~~1675~~

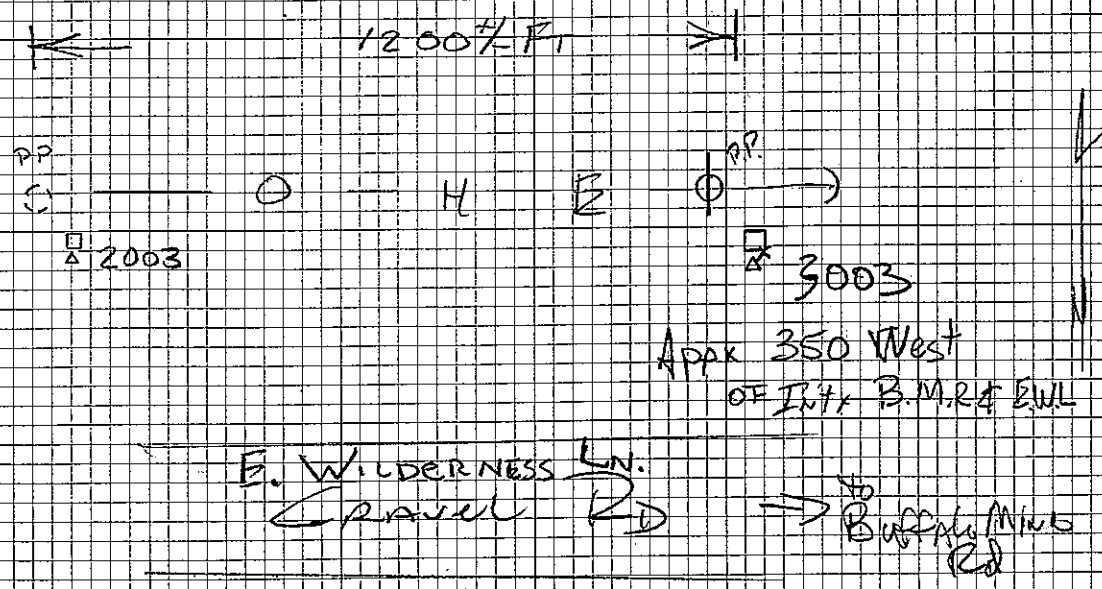
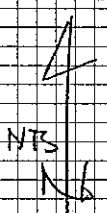
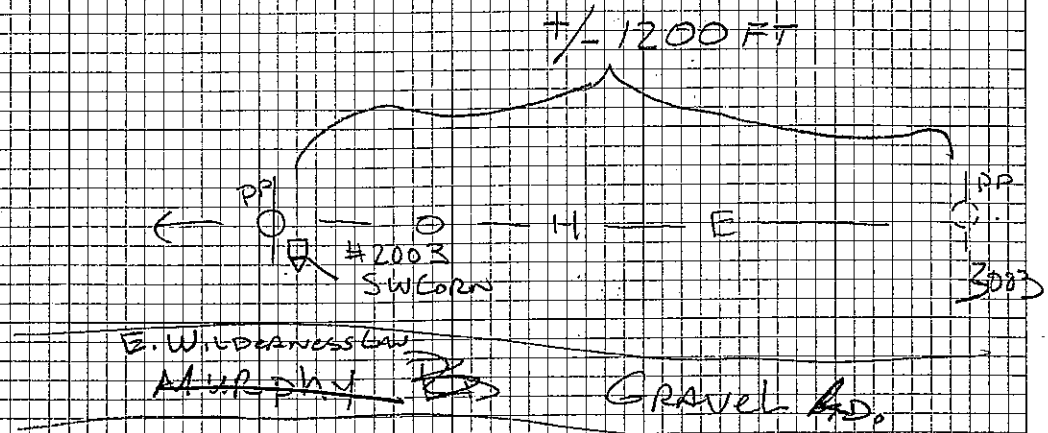


Photo Control Point

X@ 2002 See p 13 This Book

UNIT 0331

HI - 1855 / 6.09 ✓ ✓

Date

START 13:57

END 14:58

11.0.1.145D L.UMIC

ON STA @ #5 "Burma"  
@ 04:50

Begin message 29551 End 29721

10:00 - 10:45 +/- @ #4 Spand  
up & running

LEFT BURMA @ 17:50

K9

STATUS CHECK

6:30 @ #4 SPENARD  
System OK

8:50 @ #5 Buena  
System OK

8:15 @ #3 @ SPENARD FISHOOK ok

8:58 @ #4 SPENARD ok

9:18 @ #6 Willow Airport ok

17:18 @ #6 Willow Airport ok

17:39 @ #4 SPENARD ok



PHOTO CONTROL POINT

Tie 201 NW Corner 4'x3' wood Post w/ Tel Post  
 UNIT 578 HI 0.165 m Top Post  
 HI 1.280 m GND  
 START 10:35  
 END 16:34

Tie 301 SW Corner Roof Over Sign  
 UNIT 595 HI 0.315 m Roof Center  
 HI 1.55 m GND  
 START 11:01  
 END 16:40

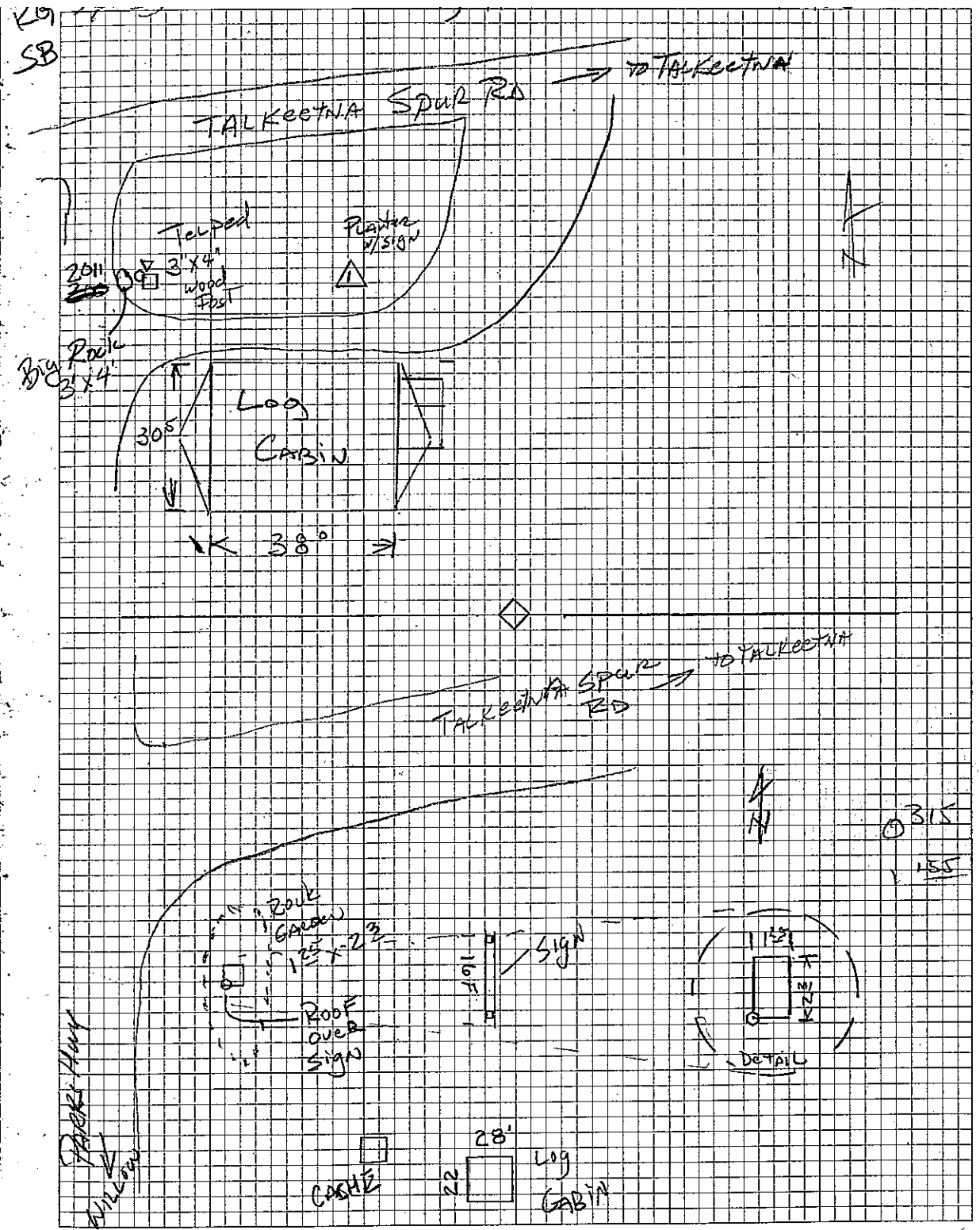


Photo Control Point

TA # 2008 NE'ly Corner Concrete SLAB  
UNIT 331 HI 0958 ✓ To Corner  
HI 1045 m To GND

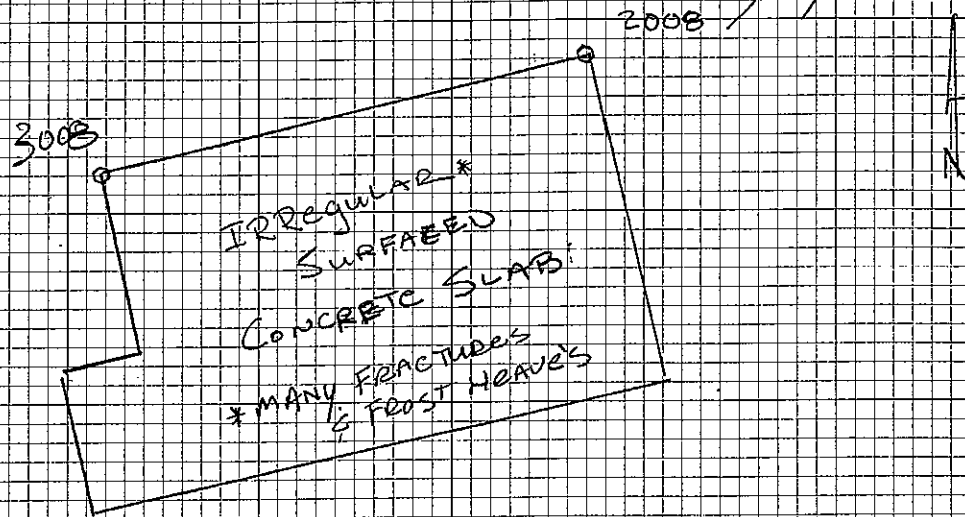
START 12:29  
END 15:46

TA # 3008 NW'ly Corner Concrete SLAB ✓  
Unit 458361 FW HI 0995 ✓ Corner SLAB  
HI 1189 ✓  
1189 GND

START 12:39  
END 15:41

KL 3B

WILLOW Fishhook Rd TO WILLOW



BASE STATION MONITORING

7:30 @ #4 SPENARD -RG.

OK 10:35 REV SB. 14:34 SWAPPED BATT. ✓  
18:26 REV SB.

8:03 @ #3 FISHHOOK

OK 12:28 RE ✓ S.B. / 17:02 RE ✓ S.B.

9:46 @ #6 WILLOW AIRPORT

OK 13:52 RE ✓ 18:02 RE ✓ SB.

11:26 @ #5 BURMA 15:15 RE ✓

OK 19:04 RE ✓

50

SB

BASE STATION MONITORING

8:07 @ #3 - OK 1:32 REV  
 STOP: 5-14-11 00:24 H1: 0.976 m

A @ CP 2 UNIT 595 - STATIC 1/2 SEC.

H1: 1.127 m ✓

START: 11:37

END: 23:37

T @ CP 1 UNIT

H1: 1.116 ✓

START: 12:17

END: 23:00

NEW JOB 5-14-11

H1: 1.127 ✓

RESTART: 23:40

END: 20:19 / 5-14-11

STATIC 1/2 SEC

NEW JOB 5-14-11

H1: 1.116 ✓

RESTART 23:03

END - 5/14/11 20:48

14:33 @ #4 - OK

14:54 @ #6 - SWAPPED BATT.

16:29 @ #5 - OK

A @ CP 3 UNIT 7225 JOB - 5-14-11

H1: 0.976 m ✓

START: 00:25

END: 5-14-11 19:36

53  
 SB

SNOW COVER SURVEY

MILEPOST 66 FIRST SIGN OF SNOW

NO SNOW NEAR ROAD CORRIDOR OR INTO TREES AS FAR AS CAN BE SEEN. SINGULAR SMALL PATCHES OF SNOW IN MATANUSKA RIVER ON GRAVEL BARS.

MILEPOST 84.6 (BASE POINT #2)

STILL NO SNOW NEAR ROAD CORRIDOR OR INTO TREES. AS MUCH AS 2-3 FEET IN SPOTS IN MATANUSKA RIVER CHANNEL.

MILEPOST 110

SNOW PATCHES AS DEEP AS 1' ON SLOPES NEAR ROAD CORRIDOR  $\frac{1}{2}$  IN TREES

FROM CP #1 LOOKING N. ALONG HWY

CONTINUING SNOW PATCHES DESCENDING SLOPES TO ROAD CORRIDOR  $\frac{1}{2}$  IN TREES

5-14-11

NO CHANGES IN SNOW SURVEY EXCEPT TO NOTE PATCHES OF SNOW ARE FEWER AND LESS DEEP.

# BASE STATION MONITORING

9:32 @ BASE 3 SWAPPED BATT.

10:17 @ BASE 2 - OK

11:02 @ BASE 1 - CAR BATT 50%

13:22 @ BASE 5

19:36 T @ 3

END: 19:36 HI: 0.975 m

REMOVED BATT

LEFT SETUP

20:18 T @ 2

END: 20:18 HI: 1.127 m

20:48 T @ 1

END: 20:48 HI: 1.115 m

22:56 T @ 5

END: 22:56 HI: 1.135 m

SB

SB

BASE STATION SETUP/MONITORING

T @ #3 FISHHOOK

H: 0.973 ✓ UNIT 7225

START: 09:13

END: 21:22

T @ #5

H: 1.135 ✓ UNIT 331

START: 10:05 END: 22:08

15:01 @ #3 - SYSTEM OK

15:51 @ #5 - SYSTEM OK

SB

SB



11-017

MSB LI DAK

BASE STATION SETUP

T @ #3 FISHHOOK  
HI: 0.912 m ✓  
START - 0500  
END - 2006

T @ #4 BIG LAKE  
HI: 1.109 m ✓ UNIT 0609  
START - 0531  
END 1811

T @ #5 BURMA  
HI: 1.134 m UNIT 0331  
START: 0611  
END: SHUTDOWN BY FW.

1626 @ #6 Willow Airport - SYSTEM OK

#7 SHUTDOWN (MONTANA CRK. BR.)  
END - 1739 UNIT ~~0538~~ # 0578  
HI - 1.339 m. SPARE CARD PRESENT  
LEVEL & PUMPS ON PICKUP

#8 SHUTDOWN (PETERSVILLE RD)  
END - 1803 UNIT # 0754  
HI - 1.349 SPARE CARD PRESENT

401  
SB  
CS



BASE STATION MAINT.

#6 (WILLOW AIRPORT) SHUTDOWN

END - 1848

HI - 1.200

UNIT # 0595

SPARE CARD PRESENT

#4 (BIG LAKE) SHUTDOWN

END - 1811

HI - 1.109

UNIT # 0609

SPARE CARD ABSENT

SETUP ON PG. 28 THIS BOOK

TS

SB

CS

# BASE STATION SETUP/MONITORING

T @ #3 FISHHOOK  
 HI - ~~0.974~~ m ✓ 0.966 m  
 START - 0444  
 END - 0339 5/19

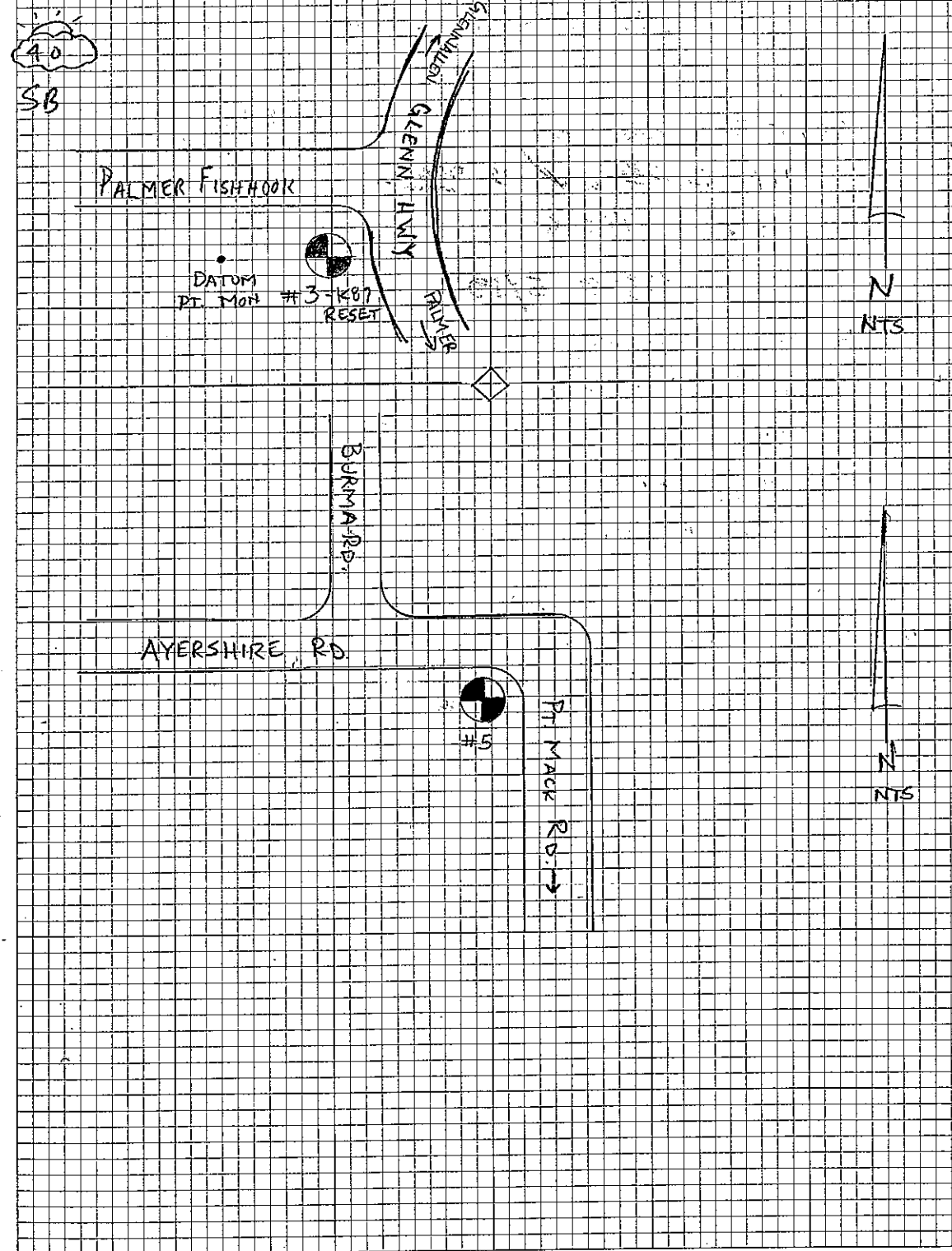
T @ #5 BURMA  
 HI - 1.135 ✓  
 START - 0530  
 END - 0433 5/19

0608 @ #4 BIG LAKE - SYSTEM OK

0718 @ #6 WILLOW AIRPORT - SYSTEM OK

0841 @ #7 MONTANA CRK. BRIDGE - SYSTEM OK

DATE	TIME	STATUS
5/19/19	0444	START
5/19/19	0339	END
5/19/19	0530	START
5/19/19	0433	END



# BASE STATION SETUP / MONITOR / TAKEDOWN

π @ 3 FISHHOOK  
HI - 0.265 m ✓  
START - 0340  
END - ~~1805~~ 2008

π @ 5 BURMA  
HI - 1.135 m ✓  
START - 0434  
END - 1025

0537 @ #4 BIG LAKE - SYSTEM OK

0558 @ #6 Willow Airport - SYSTEM OK  
POINT ID SET TO 0001

0650 @ #7 MONTANA CRK. BR. - SYSTEM OK

0829 @ #3 FISHHOOK - SYSTEM OK

π @ #6 SHUTDOWN - Willow Airport - UNIT # 0596  
END - 1520  
HI - 1.291 m

π @ #7 SHUTDOWN } UNIT 0578  
END - 1604 } MONTANA CREEK BRIDGE  
HI - ~~1.303~~ 1.339 m

π @ #8 PETERSVILLE Rd - UNIT 0754  
END - 1625  
HI - 1.340 m

25  
SB  
CS

11-012

MISD LIDAR

BASE STATION SHUTDOWN

TQ #4 BIG LAKE UNIT #0609

END 1746

H1-1.193

TQ #5 BURMA UNIT #0331

1825 - BATTERY WAS DISCONNECTED  
AND UNIT SHUTDOWN !!

H1-1.135 m

(RES)

2/2

SB

CS

## BASE STATION SETUP / MONITOR

T @ # 3 FISH HOOK UNIT # 7225 7227

HI - 0.973 m ✓

JOB - 5-20-11

START - 0421 / 0731

END - 0730 / ~~1544~~ 1544

T @ # 5 BURMA UNIT # 0331

HI - 1.134 m ✓

JOB - 5-20-11

START - 0511 / 0824

END - 0825 / 1645

0547 @ # 4 BIG LAKE - SYSTEM OK

0616 @ # 6 WILLOW - SYSTEM OK

T @ # 1 BIG LAKE SHUTDOWN - LEFT CARD

END - 1729

HI - 1.109 ✓

T @ # 6 WILLOW AIRPORT SHUTDOWN LEFT CARD

HI - 1.221 m ✓

END - 1753

T @ # 7 MONTANA CRK BR. - SHUTDOWN LEFT CARD

HI - 1.330 m

END - 1830

T @ # 8 PETERSVILLE RD. SHUTDOWN LEFT CARD

HI - 1.340 m

END - 1851

40

SB

CS

11-011

BASE STATION S/U / MONITOR

T @ # 3 FISHHOOK UNIT 7227  
HI - 0.973 m ✓  
START - 0409  
END - 1738

T @ # 5 BURMA UNIT 0331  
HI - 1.134 ✓  
START - 0456  
END - 1852

0542 @ # 4 BIG LAKE - SYSTEM OK

0603 @ # 6 WILLOW AIRPORT - SYSTEM OK

T @ # 4 SHUTDOWN  
HI - 1.104 m ✓  
END - 1944

38  
SB

11-011

M20 LIDAR

BASE STATION SU

T@ #3 - FISHERBOLT UNIT 7227

HI - 0.922 m ✓

START - 0341

END - 0330 5/23/11

T@ #2 - VANTAGE UNIT 0331

HI - 1.120 m

START - 0422

END - 0412 5-23-11

T@ #1 SHEEP MTN. AIRPORT UNIT 0263

HI - 1.03 m ✓

START - 0450

END - 0442 5-23-11

CS

SB



11-017

MDS LIDAR

BASE STATION S/V

T @ #3 FISHHOOK - UNIT 7227

H1 - 0.973 m ✓

START - 0332

END - 0303 5/24/11

T @ #2 VANTAGE UNIT 0331

H1 - 1.119 m ✓

START - 043

END - 0343 5/24/11

T @ #1 STEEP MOUNT AIRPORT UNIT 0263

H1 - 1.102 m ✓

START - 0449

END - 0412 5/24/11

CLEAR

45°

SB

BASE STATION S/U

TA @ #3 FISHHOOK UNIT 7227

HI - 0.922 m

START - 0305

END - 0845 5/25/11

TA @ #2 VANTAGE UNIT 0331

HI - 1.119 m

START - 0344

END - 0413 1008 5/25/11

TA @ #1 SHEEP MTN. AIRPORT UNIT 0263

HI - 1.182 m ✓

START - 0913

END - 1048 5/25/11

CLEAR

40°

SB

11-017

MIBS LIDAR

BASE STATION S/U

T@ #3 FISHHOOK

UNIT 7227

HI - 0.972 m ✓

START - 0846

END - 0908

S/26/11 = REF BRICK @ 9%

T@ #2 VANTAGE

UNIT 0331

HI - 1.119 m ✓

START - 1009

END - 1000

S/26/11 = REF BRICK DEAD

UNIT

0263

T@ #1 SHEEP MTN AIRPORT

HI - 1.103 m ✓

START - 1049

CAR BATT IN RED COOLER

END - 1036

② 7.1%

S/26/11

55

58

11-011  
MDD LVAR  
BASE STATION S/U

T @ # 1 FISHHOOK UNIT 7227

HI - 0.922 m ✓

BATT # 6

START - 0911

END - 0852 - 5-27-11 BATT AT 90%

T @ # 2 NAVTAGE

UNIT 0331 - BATT # 7

HI - 1.120 m ✓

BATT @ 79% - LEFT IT

START - 0958

END - 0958 5-27-11

T @ # 1 SHEEP M-TN. AIRPORT UNIT 0263

BATT # 8

HI - 1.103 m ✓

START - 1038

END - 1040 - 5-27-11 - BATT AT 79% LEFT IT

SB

11-017

MSIS LIDAR

BASE STATION S/U

T@ # 2 VANTAGE - UNIT 0331

HI - 1:20m

DID NOT REPLACE BATT # 7

START - 0959

POWER AT 79%

END - 0908

5-28-11

BATT AT 65% - LEFT IT!

T@ # 3 - ~~VANTAGE~~ SHEEP-MTN AIRPORT - UNIT 0263

HI - 1:10m

DID NOT REPLACE BATT # 8

START - 1043

POWER AT 77%

END - 0948

5-28-11

BATT AT 67% - LEFT IT!

65°  
58

BASE STATION S/U

T @ #2 VANTAGE - UNIT 0331

H1 - 1.119 m ✓

BATT @ 65% FROM 5-27-11

START - 0912

END - 0821

5-29-11 - BATT @ 50% - REPLACED

T @ #3 SHEEP MNTN AIRPORT - UNIT 0263

H1 - 1.103 ✓

BATT @ 67% FROM 5-27-11

START - 0951

END - 0849

5-29-11 - BATT @ 52% - REPLACED

50

SB

BASE STATION S/U

T @ # 2 VANTAGE - UNIT 0331 - NEW BATT

HI - 1.13 m.

START - 0822

END - 0845 5-30-11 BATT @ 83%

T @ # 3 SHEEP MNTN. AIRPORT - UNIT 0263

HI - 1.105 m.

START - 0850

END - 0923 5-30-11 BATT AT 81%

55°

SB



BASE STATION S/U

T@ #2 VANTAGE UNIT 0331

HI - 1.42 m

START - 0846

END - 0929 ~~6-1-11~~ S-31-11

T@ #3 SHEEP MOUNT AIRPORT UNIT 0263

HI - 1.103 m

START - 0924

END - 1006 ~~6-1-11~~ S-31-11

③

SB

11-011

MDS LUMK

BASE STATION S/U

TT @ #2 VANTAGE - UNIT 0331 - BATT @ 67%  
FROM 5-30-11

HI - 1.120 m

START - 0930

END - 0913 6-1-11

TT @ #3 SHEEP MNTN AIRPORT - UNIT 0263

HI - 1.103 m

BATT @ 69%  
FROM 5-30-11

START - 1007

END - 0955 6-1-11

5-31-11

60°  
SB

BASE STATION S/U

T @ #2 VANITAGE - UNIT 0331 - BATT @ 50%

HI - 1.120<sub>m</sub>

- LEFT IT

START - 0914

END - 1022 - 6-2-11 - BATT @ 22% - #1 - PICKUP

T @ #3 SHEEP MTN. AIRPORT - UNIT 0263

BATT @ 52% - LEFT IT

HI - 1.103<sub>m</sub>

START - 0956

END - 1058 - 6-2-11 - BATT @ 32% - PICKUP

55°

SB

BASE STATION S/U

T @ #2 VANTAGE UNIT 0331 - NEW BATT

HI - 1.120m

START - 1024

END - 1033 6-3-11 BATT @ 50% LEFT IT

T @ #3 SHEEP MTN. AIRPORT - UNIT 0263 - NEW BATT

HI - 1.103m

START - 1059

END - 1110 6-3-11 BATT @ 73% - LEFT IT

55

SB

BASE STATION S/V

T @ #12 VANTAGE - UNIT 0331

HI - 1.120m

START - 1034

END - KNOCKED OVER - UNKNOWN STOP TIME!!!

T @ #3 SHEEP MTN AIRPORT - UNIT 0263

HI - 1.123m

START - 1111

END - BATTERY DIED - UNKNOWN END TIME

①

SS

SB

1755 LIDAK  
BASE STATION S/U

T@ # 1 - SHEEP Mtn. AIRPORT - UNIT 0263

HI - 1.105 m

START - 1207

END -

T@ # 2 - VANTAGE - UNIT - 7221

HI - 1.025 m

START - 1306

END -

60  
SB

UNIT 0331 ON ~~A~~#2  
HAD BEEN KNOCKED DOWN  
HILL! RECOVERED ON AM of  
6-4-11 AND REPLACED WITH  
UNIT # 7221 PER F.W.

STB

NEW S/U IS WIRED TO 12"  
SPIKES DRIVEN INTO GRAVEL

BASE STATION S/U

TQ # 7 MONTANA CRE. BR. - UNIT 0578

HI - 1338<sub>m</sub>

END - 1007

START - 1008

TQ # 8 PETERSVILLE RD - UNIT 0754

HI - 1335<sub>m</sub>

END - UNIT DEAD ON ARRIVAL

START - 1038

TQ # 9 GRAVEL PIT - UNIT 0609

HI - 1264<sub>m</sub>

END - 1108

START - 1110

TQ # 10 - RR CROSSING - UNIT 0595

HI - 1205<sub>m</sub>

END - 1138

START - 1130



11-017

MSB LIDAR

⌈ @ BASE STATION # 2 VANTAGE

OFF: 21:07

ON: 21:27

H.I

⌈ @ BASE STATION # 1 SHEEP MOUNTAIN

OFF - 22:05

ON - 22:11

6-6-11

11-017-2

UNIT: 7227

UNIT: 02037

11-017

MSB LIDAR

TA @ BASE STATION #2 VANTAGE

OFF : 11:54

ON : 12:10

H.I : 1.094

TA @ BASE STATION #1 SHEEP MOUNTAIN

OFF : 12:55

ON : 13:05

H.I : 1.104

6-8-11

11-017-2

UNIT : 7229

UNIT : 0263

PHOTO CONTROL

TC 4

HI = 1.146

RCVR # 0331

START = 12:25

STOP = 18:44

TC 3

HI = 1.060

RCVR # 0514

START = 13:43

STOP = 17:59

TC 2003

HI = 3.240 M

RCVR # 8513

START = 14:29

STOP = 17:40

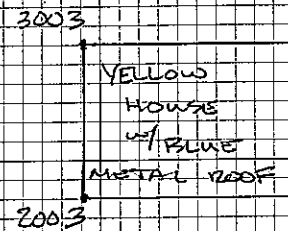
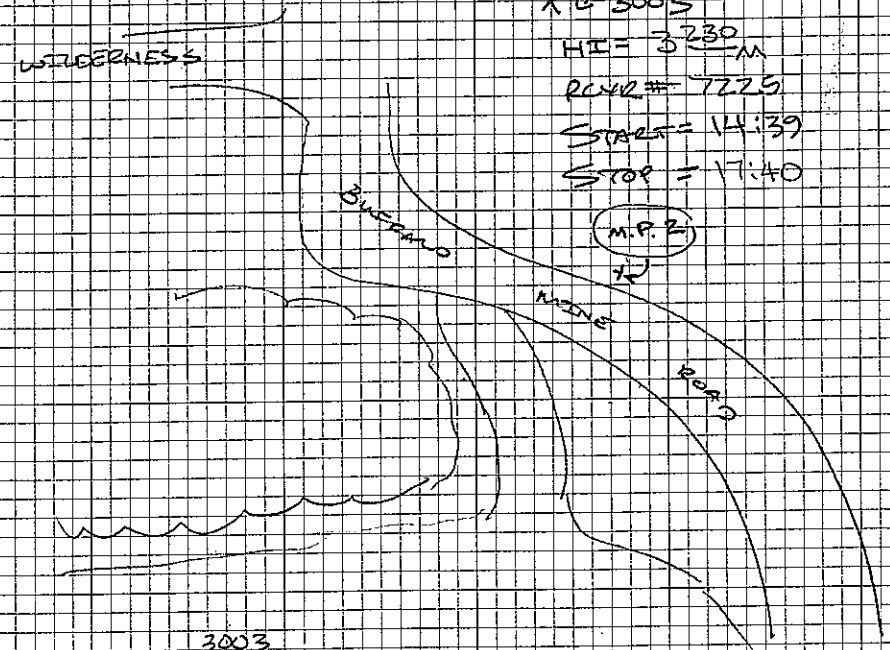
TC 3003

HI = 3.230 M

RCVR # 7229

START = 14:39

STOP = 17:40



TO 1

HI = 1.103M

RVR # 0263

STOP = 13:03

START = 13:05

1

TO 2

HI = 1.094

RVR # 1227

STOP = 15:13

START = 15:13

RTZ COVER

MOVING ANT HI = 650'

BEG PT = 60001

60001 - 60472 HWY NORTH FROM ACCESS

60473 - 60779 ALASCUM RD. (GRAVEL)

60780 - 61624 HWY SOUTH FROM  
KHEKVALOOK TRAIL HEAD  
PARKING LOT

TC 1

HI = 1.103 M

RCUR = 0263

STOP = 14:18

~~START =~~  
~~STOP =~~

TC 2

HI = 1.094

RCUR = 9227

STOP = 12:13

START = 12:20

STOP = 13:16

FIX BASE  
 61° 47' 53.494944 N  
 148° 15' 13.05244 W  
 512.920 M

TC 2001

HI = 2.315 M  $(\frac{375}{114} + \frac{1000}{114} = 2.315 \text{ M})$

RCUR = 8513

START 10:56 // STOP 11:02

CONC  
BENCH  
MARK

2001  
NEW  
LOCATION

ASPHALT  
PARKING  
AREA

3001

~~2001~~

UNACCEPTABLE  
POSITION  
FROM PL 15,  
TABLE IS  
NOT  
PERMANENT  
BY ANY MEANS.

55

1155 W11A16

XC 7

HI = 1.350

ROVER # 0578

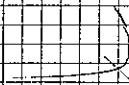
START = (STOP 11:58) 12:05

STOP = 12:47 - RESTAURANT

ROVER 6<sup>50</sup> FT/HI

BEG # 65001

LAST PT # ~~65159~~



XC 8

HI = 1.339

ROVER # ~~7257~~ 0754

STOP = 13:21

START = 13:28

STOP = 14:36

START = 14:36

ROVER - BEG # 65760

LAST # 66843

6-16-2011

F. WAGNER  
G. SPENCE



56

T 08

HI = 1.359

RCLR # 0.754

STOP = 10:04

START = 10:05

T 09

HI = 1.263

RCLR # 0.609

START = 10:38

6-17-2011

65° CLEAR

F. WAGNER  
C. SPARLOCK

T 10

HI = 1.203

RCLR # 0.595

START = 11:06

STOP =

T 07

HI = 1.338

RCLR # 0.578

STOP = 13:50



XC 6

HI = 1.290

RCVR # 0576

START = 6:47

STOP = 13:58

XC 7

HI = 1.339

RCVR # 0578

START = 7:24

STOP = 14:43

XC 8

HI = 1.339

RCVR # 0574

STOP / START = 7:47

15:08

XC 9

HI = 1.263

RCVR # 0609

STOP = 8:28

START = 8:29

XC 10

HI = 1.203

RCVR # 0595

STOP = 8:55

START = 8:56

1100 4140

T@6  
HI = 1.290  
RCVR# 0576

START = 14:00

T@7  
HI = 1.339  
RCVR# 0578

START = 14:45

T@8  
HI = 1.339  
RCVR# 0754

START = 15:09

6-20-2011

C. Spillock

TR 6

HI = 1.289

RCVR # 0576

STOP = 9:33

START = 9:34

TR 7

HI = 1.339

RCVR # 0518

STOP = 10:18

START = 10:21

6-23-2011  
600 PARTYF. WAGNER  
C. SPURLOCK

TR 9

HI = 1.263

RCVR # 0609

STOP = 13:53

START = 13:55

STOP START = 15:30

~~START =~~

RTK POWER HI = 650

BEG DT# 72001

LAST PT#

TR 10

HI = 1.205

RCVR # 0595

STOP = 11:45

START = 11:50

STOP = 13:14

START = 13:16

\* RTK PTS HI = 650

BEG 70,001

LAST PT 71170

60

TC 4

HI = 1.354

RCVR # 0754

START = 7:55

TC 3

HI = 1.119

RCVR # 3058

START = 9:38

STOP = 9:48 (6/25)

6-24-2011

F. WAGNER  
C. SPURLOCK

TC 31 END AL-MON

HI = 1.418

RCVR # 0609

START = 19:41

STOP = 10:04 (6/25)

BODENBURG LOOP

PLUMLEY

OLD GLENVIEW RD

31

61

AC 3

HI = 1.119

RCVR # 3058

START = 9:50

AC 31

HI = 1.347

RCVR # 0609

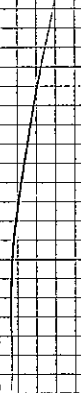
START = 10:08

STOP = 15:29

6-25-2011

95% RAIN

F. WAGNER  
C. SPURLOCK



KE BASE STATION #10

HI 1.206

UNIT 0595

OFF: SHUT DOWN UNKNOWN

DN: —

HI: —

7-6-11

11-017-2

CIMMINTI

65° PM CLOUDY

MSB LIDAR

RTK

QA = QC

X @ B

HI = 1181

RCVR # 85513

62° 18' 58.08312"

150° 14' 03.02794"

ELIP = 172.955M

START = 1045

STOP = 1210

NOTE: RADIO COMM CABLE  
APPEARS TO BE BAD, WILL  
REPLACE & TRY AGAIN  
TOMORROW. F. WAGNER

8-2-2011

530 RAIN

F. WAGNER

C. SPURLOCK



MSB LIDAR

RTK

GA-02

T@B

HI=1.192

PLNR# 8513

START = 10:51

STOP =

PT#	DESC
6002	SHRUBS/BRUSH
9001	WETLANDS
5001	FOREST
7001	BARREN - GRAVEL PARKING LOT
8001	SE. EAVE CORNER TRAPPER CREEK <del>RESA</del> COMM. CNTR
7002	BARREN - GRAVEL PARKING LOT
5002	FOREST - NORTH SIDE ROAD TO
8002	SE. EAVE CORNER PUBLIC SAFETY BLDG (3M)
5003	FOREST NORTH OF (3M)
6002	BRUSH (3M)
7003	BARREN (3M)

11-01-2

8-4-2011

60° CLOUDY

F. WAGNER  
C. SPANGLER

PT#	DESC
6003	BRUSH N.W. QUAD PARKS PETERSVIEW
9002	WETLANDS - NORTH OF R/W ≈ 1000' (PETERSVIEW ROAD)
9003	WETLANDS ≈ 1000' EASTERLY OF N SIDE
8003	S.W. EAVE CORNER CACHE CREEK LODGE

RTK  
BA-06

RD 7                      62° 06' 16.67578 N  
HE = 1.330 M            150° 03' 35.21400 W  
RWP # 8513                89.535 M

PT #

DESC

- |      |  |
|------|--|
| 7004 | BARREN - GRAVEL PULL OUT (3M)                      |
| 5004 | FOREST - C SWIFTNA VALLEY SCHOOL                   |
| 7005 | BARREN - GRAVEL C DRIVE TO ↑                       |
| 8004 | N.W. CORNER RED ROOF / WHITE BLDG                  |
| 6004 | BRUSH - ALONG HWY C MP 98                          |
| 8005 | N.W. CORNER ARCTIC CAR SHOP - GREEN ROOF           |
| 5005 | FOREST ALONG MONTANA CRV ROAD                      |
| 6005 | BRUSH  |
| 8004 | WETLANDS   |
| 6006 | BRUSH  |
| 9005 | WETLANDS   |
| 9006 | WETLANDS   |
| 7006 | BARREN   |
| 5006 | FOREST   |
| 8006 | NE CORNER BROWN BUILDING <sup>w</sup> / GREEN ROOF |

85-201  
56° CLOT

F WAGNER  
C SPURLOCK

RTK

QA-QC

TR 6

HT=1.289M

KUR# 0513

61° 45' 09.23825" N  
150° 03' 19.2829" W  
73.825M

RTK

DESC

8007

N.E. CORNER OF FOUNDATION (OLD PIONEER BLDG.)

6007

BRUSH

7007

WETLANDS

9007

~~6008~~

~~BRUSH~~

PDC RADIO BATTERY DEAD @ 12:30PM

END OF DAY

8-8-2011  
58° PARTY

F. WAGNER  
C. SPURLOCK

RTK

QA-QC

JOB 8-7-11  
(CONTINUED)

TIR 6

HS=11.7Z

RVR=8513

R#

DESC

6008	BRUSH WILLOW FISH HOLES/INDEPENDENCE WY
8008	N.W. CORNER R/R WIL BLVD - WILLOW FISH
9008	WETLANDS
9009	WETLANDS
5007	FOREST
8008	BARREN - GRAVEL PARKING LOT WILLOW TRADING POD
9008	FOREST
6009	BRUSH NORTH OF WILLOW SCHOOL
8009	EASTERN MOST SOUTH CORNER OF ↗
7009	BARREN - GRAVEL P-LOT
5009	FOREST

8-9-2011  
5:50 RAIN

F. WAGNER  
L. SPURLOCK

RFLK

QA-QC

TC 4      61° 34' 28.4127" N  
 149° 43' 41.73400" W  
 HI = 1.269      TI = 130 M  
 RLVR # 853

<u>R#</u>	<u>DESC</u>
9010	WETLANDS
5010	FOREST
5011	FOREST
9011	WETLANDS
7010	BARRON - GRAVEL DRIVE
6010	BRUSH
5012	TREES
8010	N.W. CORNER PLANTING HOUSTON MED SCHOOL
7011	BARRON - GRAVEL P-LOTS GORTLA FIREWORKS
7012	BARRON - GRAVEL P-LOTS BIG LAKE RENTAL
8011	S.W. CORNER BIG LAKE RENTAL
6011	BRUSH
6012	BRUSH
9012	WETLANDS
8012	E.N.E. EXPOSE CORNER

8-10-2011  
 60° BETTY

F. WAGNER  
 C. SPURLOCK

RTK

QA-QC

$\overline{NCS}$        $61^{\circ}25'34.10605''N$   
 $HI=11285$      $190^{\circ}01'08.71085''W$   
 $RLV\#8513$        $69.18M$

PT#	DESC.
7013	BARREN - GRAVEL ROAD
8013	S.E. COR. YELLOW "4" GASOLINE MARBLE
<del>8013</del>	
6013	BRUSH
7014	BARREN - GRAVEL CUL-DE-SAC
5013	FOREST
6014	BRUSH
5014	FOREST
8014	S.W. EAVE CORNER GREEN ROOF
7015	BARREN - GRAVEL LOT
<del>8015</del>	BRUSH
8015	SE. CORNER YELLOW EAVE CORNER
5015	FOREST
9013	WETLANDS
9014	WETLANDS
9015	WETLANDS

8-10-2011  
60° PARTLY

F. WAGNER  
C. SPURLOCK



## LIDAR SUPPORT

JOB = 8-11-11 (all)

CARD A

TC 4

HI = 1.271

RCVR # 0154

START = 9:41

STOP = 11:17 (8-15)

TC 3

HI = 1.175

RCVR # 0263 (CONTROLLER 20576)

61° 37' 40.15839" N  
 149° 07' 14.91945" W  
 176.319 M

START = 10:30 // 9:25 8-12

STOP = 9:24 (8-12) // 12:23 8-15

8-11-2011  
65° SUNWAGNER  
SPURLOCK

TC 2

HI = 1.228

RCVR # 0331

START = 11:15

STOP = ~~9:24 (8-12)~~ 13:07 (8-15)

TC 1

HI = 1.285

RCVR # 0609

61° 48' 37.00792" N  
 147° 30' 54.95489" W  
 862.507 M

START = 12:24

STOP = 13:43 (8-15)



RTK  
CA-OC

RTK

DESK

BASE SETUP INFO - SEE PREVIOUS PAGE

7016	BARREN - SOUTH END R/W
6016	BRUSH
5016	FOREST - SPURGE (SCATTERED)
5017	
6017	BRUSH
9016	WETLANDS
7017	BARREN
*8016*	<sup>EDIT</sup> ROD TO 3M S.E. CORNER GREEN ROOFED SHED
7018	BARREN
9017	WETLANDS
6018	BRUSH
5018	FOREST
9018	WETLANDS
6019	BRUSH
8017	S.W. CORNER GREEN ROOFED SHED

8/11/2011  
60° SUNNY

WAGNER  
SPURGE

RTK

QA-QC

FB\*

DESK

\* BASE SETUP INFO - SEE PAGE 10 THIS FB\*

~~7019~~

~~BARRON~~

6020

BRUSH

8018

S.W. CORNER S&D

7019

BARRON

7020

BARRON

8019

EAVE CORNER @ MATUNUSKA CAMP GRIND

8020

S.E. CONC. PAD CUR @ F.M. GAS STATION

5019

FOREST

~~8-12-2018~~

FNA  
C.S.

LIDAR SUPPORT

JOB 8-15-11

TR 4

CARD B

HI = 1.271

(ALL RUNS)

RUN # 0154

START = 11:18

STOP =

TR 3

HI = 1.175

RUN # 0263

START = 12:24

STOP =

8-15-2011  
560 PARTLY

FW  
L.S.

TR 2

HI = 1.228

RUN # 0331

START = ~~13:01~~ 13:09

STOP =

TR 1

HI = 1.285

RUN # 0109

START = 13:47

STOP =

MSB LIDAR

REPLACEMENT PIDS

N.C. 3005

HI = ~~1.25~~ ~~3.235~~ 4.235M

RCLR #0595

START = 13:34G

STOP = 16:36

11-017-2

74

8-18-201  
588 LIDAR

WAGNER  
SPURLOCK

